

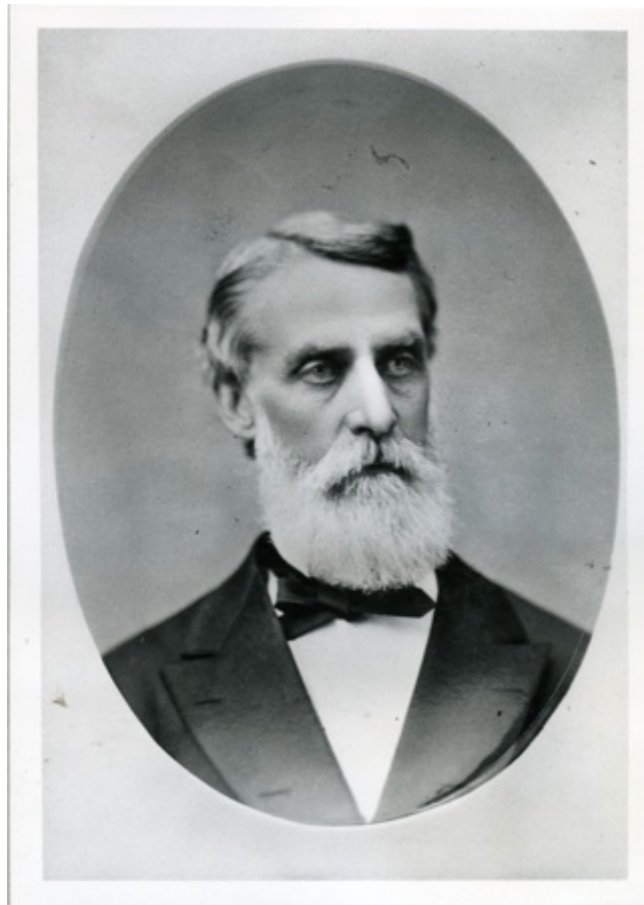
The Collection of Charles Reed Bishop

1822-1915

Husband of Kamehameha Schools Founder Ke Ali'i Pauahi

Kamehameha Preparatory Department Founder

Businessman, Benefactor, Philanthropist



Finding Aid

Kamehameha Schools Museum Archive

Stacy Naipo, KSK 1982

Archivist

Candace W. Lee

Assistant Archivist

Finding Aid

By Candace W. Lee

Kamehameha Schools Assistant Archivist

Abstract: This small collection includes an assortment of papers and booklets collected by Janet Zisk, Kamehameha Schools Archivist (1992-2013). It includes 3 original letters purchased at auction and donated to Kamehameha Schools in 1993 by Bert and Susan Kobayashi.

Title: Collection of Charles Reed Bishop materials 1884-

Size: 1.5 linear feet (3 boxes, 2 folders)

Provenance: The Archivist assembled the bulk of the collection which includes donated original letters.

Bulk dates: 1884 - present

Access: Access by permission of archivist or director.

Collection identifier: CRB 2004-4

Language: In English

Citation: Kamehameha Schools. Each researcher assumes full responsibility to comply with current U.S. copyright laws.

Bibliographic Record: Kamehameha Schools Library Catalog. Keyword: Collection of Charles Reed Bishop.

Biographical Note (digital copies available by request to the Archivist or Director)

Charles Reed Bishop

January 25, 1822 - June 7, 1915

48 Years in Hawai'i from 1846 - 1894

October 12, 1846. Charles arrives from New York with best friend, William Little Lee



1847-50. Charles meets, courts and marries Ke Ali'i Pauahi at the Chiefs' Children's School (later the Royal School)



June 4, 1850. Rev. Armstrong marries Charles and Pauahi in the Royal School parlor.



From 1855, Hale'akalā, the home Pāki built for his daughter, becomes the Bishops' home.

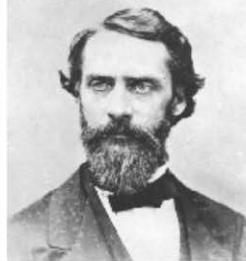


(current location: Tanager Park on the corner of Bishop and S. King Streets)

August 17, 1858. Bishop and Aldrich open Hawai'i's first bank, Bishop & Company (now First Hawaiian Bank).



1859-1892. Bishop is appointed a Privy Councillor. 1859 Kamehameha IV appoints him to the House of Nobles.



December 21, 1869. Bishop is appointed to the Board of

May 28, 1857. Friend William Little Lee, Chief Justice of the Hawai'i Supreme Court, dies.

September 1862. Lili'uokalani, Pauahi's hanai sister, marries John Dominis.

1866 The Bishops begin to travel frequently to the U.S.A. and Europe.



1859-75 Bishop is Treasurer of The Queen's Hospital Trustee group.



1860 He is Secretary of Kawaiaha'o Seminary. He is on the board of schools and charities.

August 29, 1863. Keolaokalani, son of Princess Ruth and hanai son of Charles and Bernice Pauahi Bishop dies at 6 months of age.

1874. Bishop presides over the first legislature under King Kalākaua.



December 29, 1876. Bishop partners with C. Brewer and Company to establish a sugar plantation on his land in Kaū, Hawai'i (island). By 1883, he is the largest C. Brewer shareholder.

1889-94, Bishop serves on the Board of Directors of Mutual Telephone Company. 1883-91. Bishop is President of the Chamber of Commerce.

From 1872. The Bishop relatives arrive including niece, Emma Bernice, nephew, E. Faxon Bishop, and cousin Cordelia Church Allen.



October 16, 1875. HRH Princess Victoria Kaiulani Cleahorn is born.

October 16, 1884. Bernice Pauahi Bishop dies at Keōua Hale.



Sunday, November 2, 1884. Her funeral. The funeral procession ends at Mauna 'Ala.

Mr. Bishop constructs the Kamehameha vault that is completed in 1887.

1884. Bishop is a trustee of Kamehameha Schools under the Will of Bernice Pauahi Bishop.



October 3, 1887. The Kamehameha School for Boys opens.



October 29, 1888. Bishop founds and funds the Preparatory Department of Kamehameha Schools.



December 10, 1888. Bishop delivers the first Founder's Day speech, *The Purpose of the School*. It is recorded in the first school newspaper.

HANDICRAFT.

THE KAMEHAMEHA SCHOOLS ARCHIVES

Handicraft is a monthly journal published by the Kamehameha Schools. It is a record of the work of the students of the Kamehameha Schools. It is a record of the work of the students of the Kamehameha Schools. It is a record of the work of the students of the Kamehameha Schools.

1889. Bishop builds a museum on the grounds of the Kamehameha School for Boys to honor his wife, Bernice Pauahi.



From 1886, Bishop increases his monetary giving to local educational institutions and charities.

From 1890. Bishop begins to give his properties to the trustees under the Will of Bernice P. Bishop for the Kamehameha Schools.

March 2, 1894. Mr. Bishop moves permanently to San Francisco, California. His interest in the welfare of the Schools continues until his death in 1915.

Photo credits: Bishop Museum, The Kamehameha Schools Archives, The Kamehameha Schools Photo Archives, The Honolulu Advertiser, The Queen's Medical Center,

© The Kamehameha Schools Archives, 2004

C.W.L.

CONTAINER LIST

Box 1 Title: Kamehameha Schools Bishop Estate. Trustees. Charles Reed Bishop, 1884-1898. Born: January 25, 1822. Died: June 17, 1915.

Box 2: Title: Kamehameha Schools Bishop Estate. Trustees. Charles Reed Bishop, 1884-1898. Born: January 25, 1822. Died: June 17, 1915.

Box 3: Kamehameha Schools / Bishop Estate. Bishop, Charles Reed (1822-1915). Letters Dated Honolulu February 8th, 1856 to his Uncle William Brayton, Kingbury, New York. Donated by Bert and Susan Kobayashi, May 17, 1995. Added March 29, 1993. Charles Reed Bishop Letters Dated Honolulu, April 3, 1886 and March 3, 1883. Donated by Bert Kobayashi.